



Facilities Management Solutions

Evacuation Plans

How prepared is your facility for an unexpected emergency?

An emergency evacuation plan provides peace of mind for both management and occupants, knowing that there is a documented strategy outlining the procedures for safely exiting a facility in the event of an emergency.

FMS delivers tailored emergency preparedness solutions to enhance your facility's readiness, ensure occupant safety, and maintain compliance with safety standards, preparing you effectively for any unexpected situation.

Emergency Evacuation Planning

Evacuation Procedures: Develop clear, easy-to-follow evacuation procedures. These procedures should be written in simple language and should be accessible to all facility occupants.

Emergency Evacuation Plan Drawings: Create detailed drawings or maps of the facility that clearly show evacuation routes and exits. These should be posted in conspicuous locations throughout the facility.

Identified Area of Refuge: Select suitable assembly points outside the building where evacuees should gather after leaving the building. These should be clearly marked on the evacuation plan drawings.

Main Elements:

1. Building Layout
2. Evacuation Routes
3. Emergency Exits
4. Fire Extinguisher & Pull Station Locations
5. AED Locations
6. Identified Area of Refuge



Training and Drills

After the plan is developed, it's important to ensure everyone in the facility understands the procedure:

Training Programs:

Conduct regular training sessions to familiarize staff with the evacuation procedures, the layout of the facility, and the location of assembly points.

Conduct Drills:

Regularly scheduled drills should be conducted to practice the evacuation procedures and identify any potential issues or areas of confusion that need to be addressed.



AVAILABLE THROUGH
GRAINGER
FOR THE ONES WHO GET IT DONE

2024.05.V2



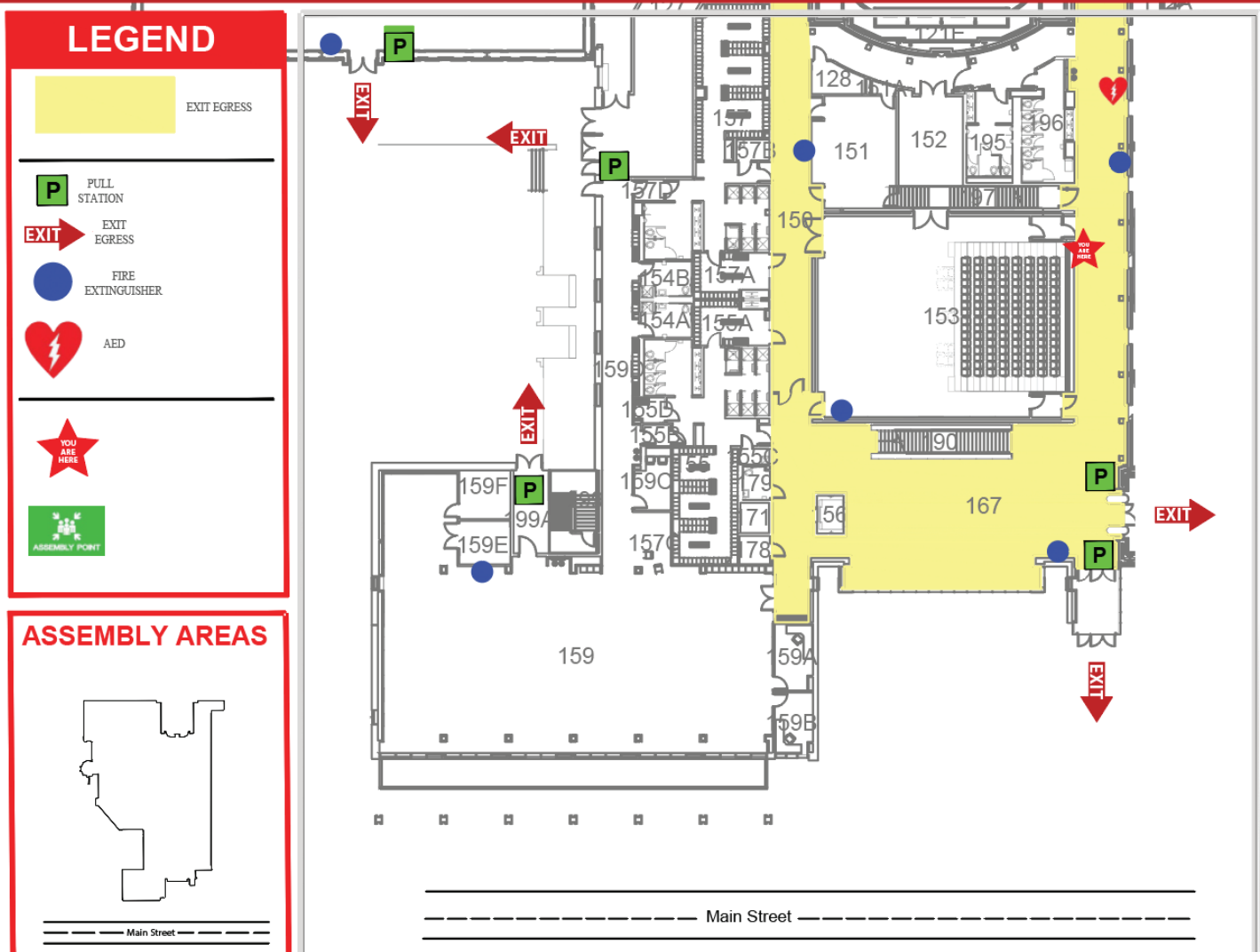


**Facilities
Management
Solutions**

Evacuation Plans

**Tailored Evacuation Plan for the Safety of Your Staff
and Occupants**

SAMPLE EVACUATION MAP



2024.05.V2